

TELESCOPIC BOOM LIFT

SPT26AC

Compliant with CE standards



Safe



Efficient



Intelligent

- Intelligent digital equipment management system with visual human-machine interaction system for improved efficiency and intelligence
- Precise control of boom lift and extension that minimizes platform oscillation, and turning is optimized for smoother traveling
- Fully proportional valve group and controls for more precise movements
- Efficient poprietary boom descent technology with zero energy consumption
- IP67 rated electrical parts, for exceptional durability
- 90+% common parts with the Sany boom product family, for easier maintenance and parts availability
- 360° continuous rotation for ease of operation



Elevates in tight spaces



Tight turning radius



High stability coefficient



Long component life



Three capacity zones



Low TCO



Large capacity



Powerful



Exceptional controlability

◆ All products of the Sany aerial work platform series comply with CE standards

This printed matter is not part of the contract and does not constitute a component of the vehicle purchase contract. Due to continuous product improvement, we reserve the right to change product models, specifications, and configurations without prior notice. The pictures are for reference only, and the actual product shall prevail. The products in the pictures may have non-standard configurations, and some components may need to be purchased separately. (Within the scopes permitted by law, Sany has the final interpretation right)
Copyright version on 2024 January

TELESCOPIC BOOM LIFT

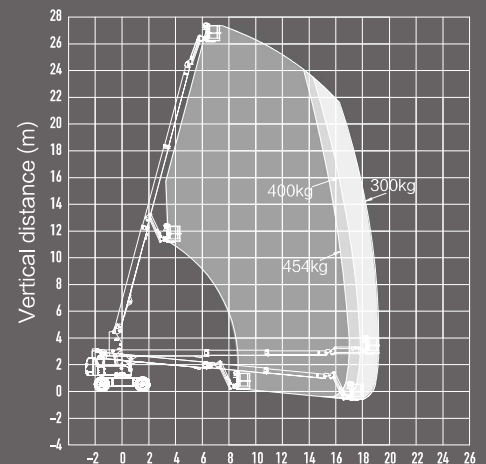
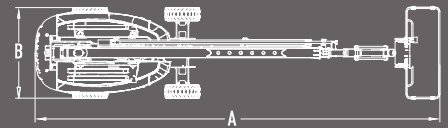
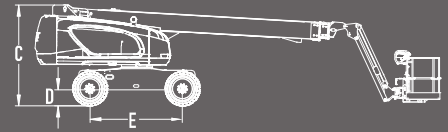
SPT26AC

Compliant with CE standards



QUALITY CHANGES THE WORLD

Model	SPT26AC	
	Metric	Imperial
Dimensions		
Maximum platform height	26.2m	85ft11in
Length/Stowed	12.4m	40ft81in
Width/Stowed	2.49m	8ft20in
Height/Stowed	3.03m	9ft11in
Minimum ground clearance (mm)	330	1ft09in
Wheelbase	3.05m	10ft01in
Rated load	300kg/400kg/454kg (restricted)	661lb/881lb/1000lb (restricted)
Maximum horizontal extension	19.2m	62ft12in
Maximum lowering depth	0.57m	1ft10in
Turntable tail swing	1.48m	4ft10in
Jib rotation angle	-65° , +70°	-65° , +70°
Turntable slewing angle	360° continuous	360° continuous
Platform dimension (L × W)	2.44m × 0.91m	8ft × 2ft
Performance		
Maximum driving speed (retracted state) (km/h)	5	3.11mph
Maximum driving speed (lifting state) (km/h)	0.8	0.50mph
Maximum platform occupancy	2/3 (indoor)	
Maximum allowable working angle (°)	X-5° /Y-5°	
Minimum turning radius (inside)	3.6m	11ft97in
Minimum turning radius (outside)	6.8m	22ft37in
Monitor	7-inch color display screen	
Drive mode	4WD × 2WS	
Power		
Lithium battery	460Ah/80V	
Charger	80V/80A (380V) / 80V/40A (220V)	
Charging time (h)	≤5 (380V) / ≤10 (220V)	
Maximum gradeability	45%	
Others		
Overall weight	15670kg	34546lb



SPT26AC Work Envelope

SANY AERIAL WORK EQUIPMENT Co., Ltd

Address: No. 18-688, Industrial Road, Gaoxin District, Wuxing District, Huzhou, Zhejiang Province

Postal code: 313002

Hotline: 400-8878-318

Website: www.sanyglobal.com

Copyright version on 2024 January